

# Chicago Valves & Controls

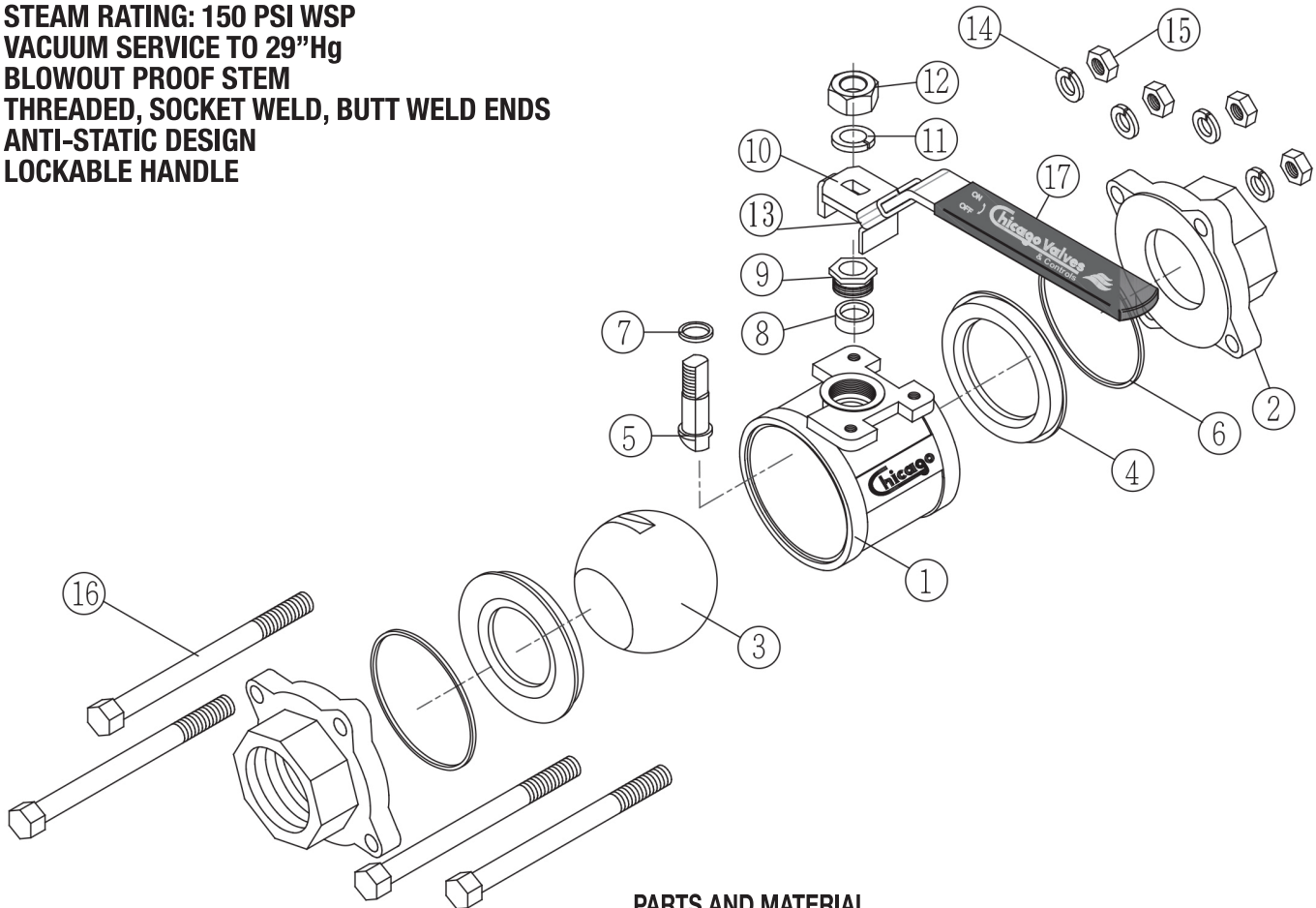


**SERIES 34**

**FULL PORT 3PC BALL VALVE**

1000 CWP (1/4" - 2")  
 800 CWP (2-1/2" - 3")  
 600 CWP (4")  
 316 STAINLESS STEEL - ASTM A351 CF8M  
 CARBON STEEL - ASTM A216 WCB  
 STEAM RATING: 150 PSI WSP  
 VACUUM SERVICE TO 29"Hg  
 BLOWOUT PROOF STEM  
 THREADED, SOCKET WELD, BUTT WELD ENDS  
 ANTI-STATIC DESIGN  
 LOCKABLE HANDLE

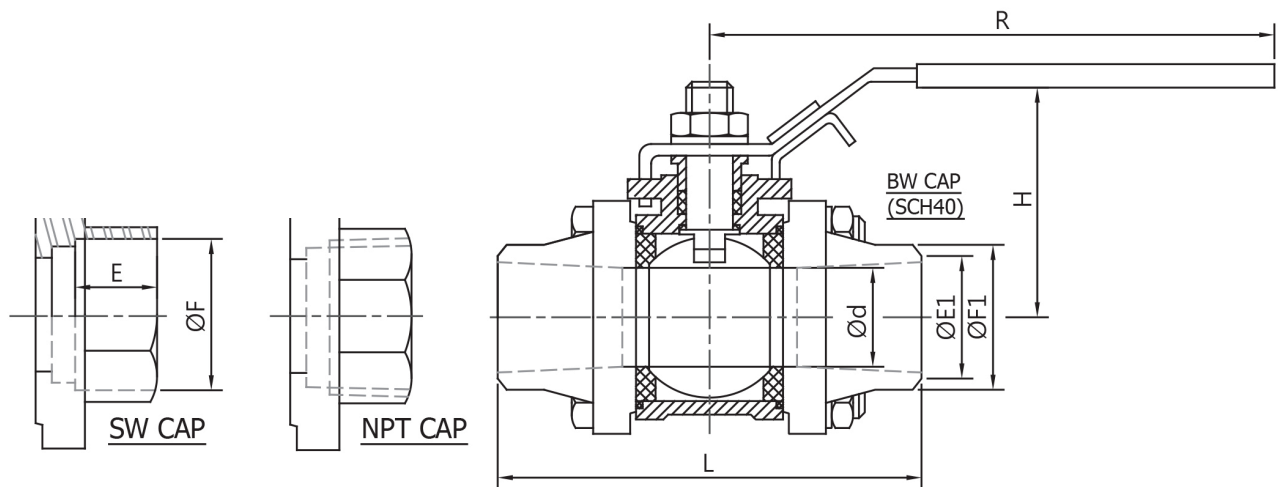
## Series 34



### PARTS AND MATERIAL

| PART NO | PART NAME      | QTY   | MATERIAL   |
|---------|----------------|-------|--|
| 1       | BODY           | 1     | CARBON STEEL ASTM A216 WCB<br>316 STAINLESS STEEL ASTM A351 CF8M |
| 2       | END CAP        | 2     | CARBON STEEL ASTM A216 WCB<br>316 STAINLESS STEEL ASTM A351 CF8M |
| 3       | BALL           | 1     | 316 STAINLESS STEEL  |
| 4       | SEAT           | 2     | RTFE   |
| 5       | STEM           | 1     | 316 STAINLESS STEEL  |
| 6       | BODY SEALS     | 2     | PTFE   |
| 7       | THRUST WASHER  | 1     | CARBON FILL PTFE   |
| 8       | STEM PACKING   | 1     | PTFE   |
| 9       | GLAND PACKING  | 1     | 300 STAINLESS STEEL  |
| 10      | HANDLE         | 1     | 300 STAINLESS STEEL  |
| 11      | HANDLE WASHER  | 1     | 300 STAINLESS STEEL  |
| 12      | HANDLE NUT     | 1     | 300 STAINLESS STEEL*   |
| 13      | LOCKING DEVICE | 1     | 300 STAINLESS STEEL  |
| 14      | SPRING WASHER  | 4/12* | 300 STAINLESS STEEL*   |
| 15      | NUTS           | 4/12* | 300 STAINLESS STEEL*   |
| 16      | BODY BOLTS     | 4/12* | 300 STAINLESS STEEL*   |
| 17      | HANDLE SLEEVE  | 1     | PVC  |

## Series 34



**DIMENSIONS (INCHES)**

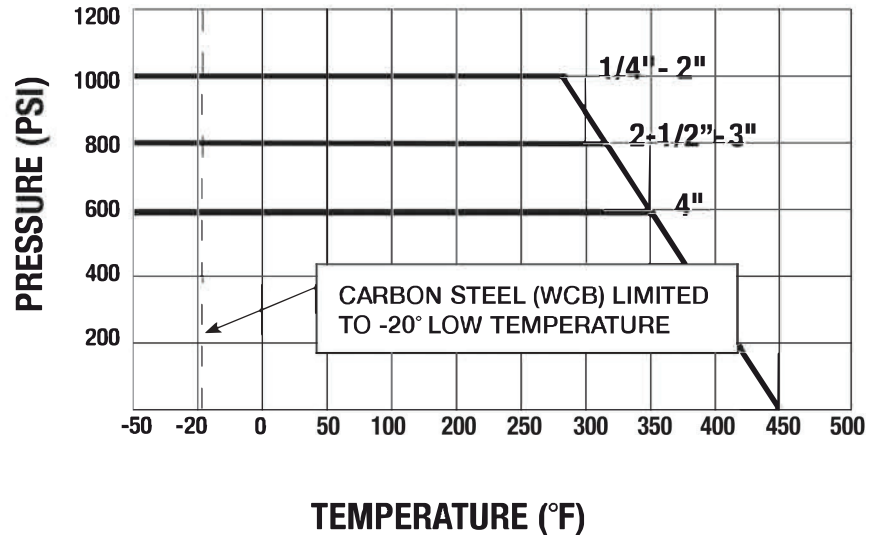
| SIZE   | L     | d    | E    | F    | H    | R     | L1<br>(BW) | E1   | F1   |
|--------|-------|------|------|------|------|-------|------------|------|------|
| 1/4"   | 2.50  | 0.46 | 0.44 | 0.56 | 2.21 | 4.00  | 2.56       | 0.36 | 0.54 |
| 3/8"   | 2.50  | 0.50 | 0.44 | 0.69 | 2.21 | 4.00  | 2.56       | 0.49 | 0.68 |
| 1/2"   | 2.83  | 0.59 | 0.44 | 0.86 | 2.36 | 4.00  | 2.83       | 0.62 | 0.84 |
| 3/4"   | 3.34  | 0.79 | 0.56 | 1.07 | 2.47 | 5.00  | 3.34       | 0.82 | 1.05 |
| 1"     | 3.62  | 0.98 | 0.72 | 1.33 | 2.81 | 5.70  | 3.62       | 1.05 | 1.32 |
| 1-1/4" | 4.33  | 1.26 | 0.72 | 1.68 | 3.08 | 5.70  | 4.33       | 1.38 | 1.66 |
| 1-1/2" | 4.83  | 1.50 | 0.75 | 1.92 | 3.47 | 7.50  | 4.83       | 1.61 | 1.90 |
| 2"     | 5.58  | 2.00 | 0.84 | 2.41 | 3.82 | 7.50  | 5.58       | 2.07 | 2.38 |
| 2-1/2" | 6.85  | 2.56 | 1.13 | 2.90 | 5.80 | 10.00 | 6.84       | 2.47 | 2.88 |
| 3"     | 7.60  | 3.00 | 1.25 | 3.54 | 6.23 | 10.00 | 7.57       | 3.07 | 3.50 |
| 4"     | 10.80 | 3.94 | 1.75 | 4.54 | 7.30 | 11.34 | 10.76      | 4.03 | 4.50 |

## APPLICABLE STANDARDS

|                               |             |
|-------------------------------|-------------|
| SHELL TEST                    | ASME B16.34 |
| SEAT TEST                     | ASME B16.34 |
| THREADED AND SOCKET WELD ENDS | ASME B16.11 |
| BUTT WELD ENDS                | ASME B16.25 |

| SIZE   | CV (GPM) | WEIGHT LBS. |
|--------|----------|-------------|
| 1/4"   | 20       | 0.9         |
| 3/8"   | 25       | 0.9         |
| 1/2"   | 28       | 1.1         |
| 3/4"   | 50       | 1.8         |
| 1"     | 70       | 2.6         |
| 1-1/4" | 110      | 4.0         |
| 1-1/2" | 170      | 6.3         |
| 2"     | 395      | 9.7         |
| 2-1/2" | 835      | 18.7        |
| 3"     | 860      | 29.5        |
| 4"     | 1780     | 47.5        |

## PRESSURE-TEMPERATURE RATING 1/4"-4" SERIES 34



## HOW TO ORDER

| Size        | Series        | Body                  | Ball & Stem            | Seats                 | Ends (Alloy)          | Ends                       | Options                             |
|-------------|---------------|-----------------------|------------------------|-----------------------|-----------------------|----------------------------|-------------------------------------|
| <b>SIZE</b> | <b>SERIES</b> | <b>BODY</b>           | <b>BALL &amp; STEM</b> | <b>SEATS</b>          | <b>ENDS</b>           | <b>ENDS</b>                | <b>OPTIONS</b>                      |
| 1/4"        | 34            | 6 316 Stainless Steel | 6 316 Stainless Steel  | 6 316 Stainless Steel | 6 316 Stainless Steel | TE Threaded Ends           | <input type="radio"/> H Oval Handle |
| 3/8"        |               | 4 Carbon Steel        |                        |                       | 4 Carbon Steel        | SW Socket Weld Ends        |                                     |
| 1/2"        |               |                       |                        |                       |                       | T/S Threaded / Socket Weld |                                     |
| 3/4"        |               |                       |                        |                       |                       | BW4 Butt Weld SCH 40       |                                     |
| 1"          |               |                       |                        |                       |                       | BW1* Butt Weld SCH 10      |                                     |
| 1-1/4"      |               |                       |                        |                       |                       |                            |                                     |
| 1-1/2"      |               |                       |                        |                       |                       |                            |                                     |
| 2"          |               |                       |                        |                       |                       |                            |                                     |
| 2-1/2"      |               |                       |                        |                       |                       |                            |                                     |
| 3"          |               |                       |                        |                       |                       |                            |                                     |
| 4"          |               |                       |                        |                       |                       |                            |                                     |

**Chicago Valves**  
& Controls



Toll-Free (833) 831-2312

Local (312) 637-3557

Fax: (312) 637-3543

E-Mail: [sales@chicagovalves.com](mailto:sales@chicagovalves.com)

[www.chicagovalves.com](http://www.chicagovalves.com)

885 Cambridge Dr.

Elk Grove Village, Illinois 60007 U.S.A.