

Chicago Valves & Controls

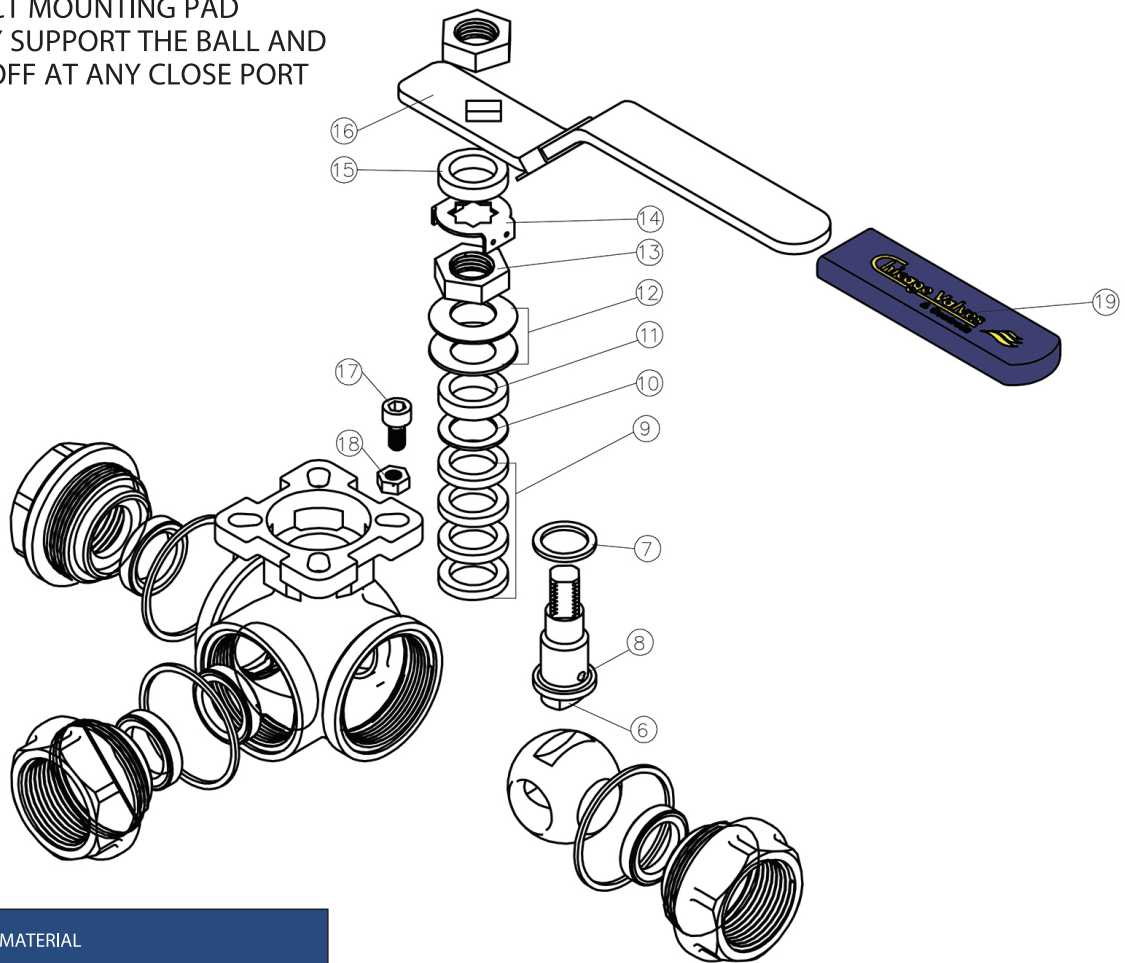


SERIES 16

3 WAY BALL VALVE

316 STAINLESS STEEL ASTM A351 CF8M
 LIVE LOADED STEM PACKING
 BLOW OUT PROOF STEM
 AVAILABLE IN T OR L PORT CONFIGURATION
 LOCKABLE HANDLE
 ISO 5211 INTEGRAL DIRECT MOUNTING PAD
 4 SEAT DESIGN SECURELY SUPPORT THE BALL AND
 PROVIDE POSITIVE SHUTOFF AT ANY CLOSE PORT
 ANTI-STATIC DESIGN

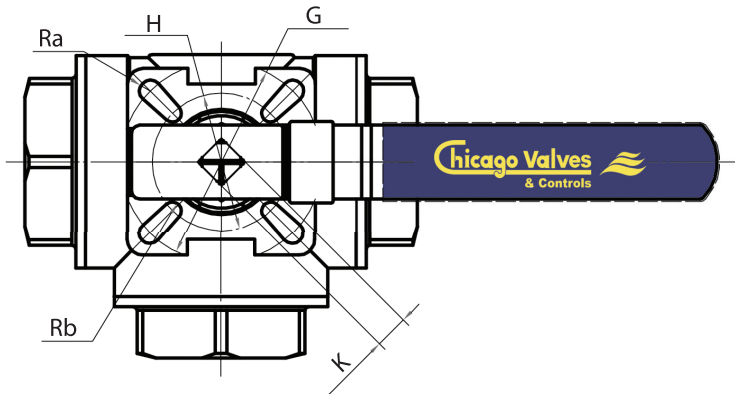
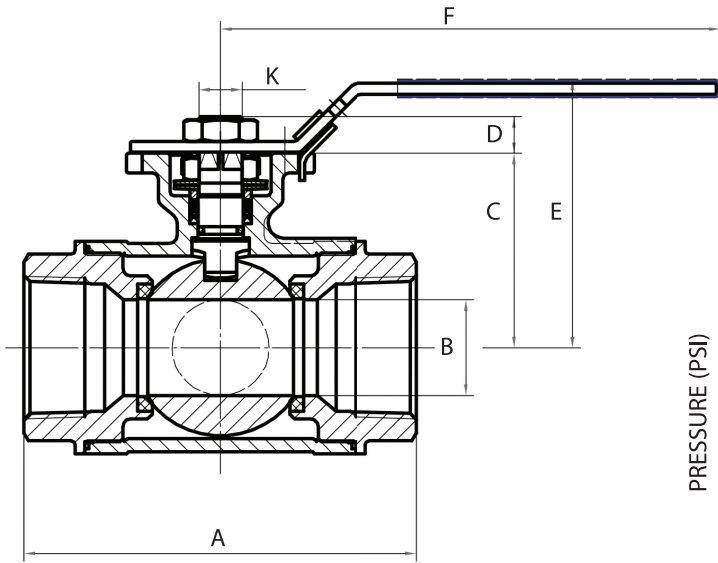
Series 16



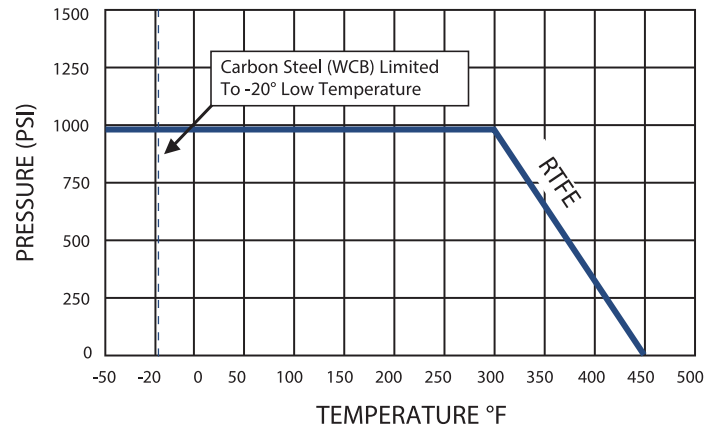
PARTS & MATERIAL

PART NO.	PART NAME	QTY.	MATERIAL
1	Body	1	316 Stainless Steel ASTM A351 CF8M
2	End Piece	3	316 Stainless Steel ASTM A351 CF8M
3	Seat	4	RTFE
4	Ball	1	316 Stainless Steel
5	Body Seal	3	PTFE
6	Stem	1	316 Stainless Steel
7	Thrust Washer	1	Carbon Fill RPTFE
8	O-Ring	1	FPM
9	Stem Packing	4	PTFE
10	Thrust Bearing	1	RPTFE
11	Gland Packing	1	304 Stainless Steel
12	Belleville Washer	2	300 Series Stainless Steel
13	Packing Nut	1	300 Series Stainless Steel
14	Lock Tab	1	300 Series Stainless Steel
15	Washer	1	300 Series Stainless Steel
16	Handle	1	300 Series Stainless Steel
17	Travel Stop	1	300 Series Stainless Steel
18	Nut	1	300 Series Stainless Steel
19	Handle Sleeve	1	PVC

Series 16



PRESSURE-TEMPERATURE RATINGS SERIES 16

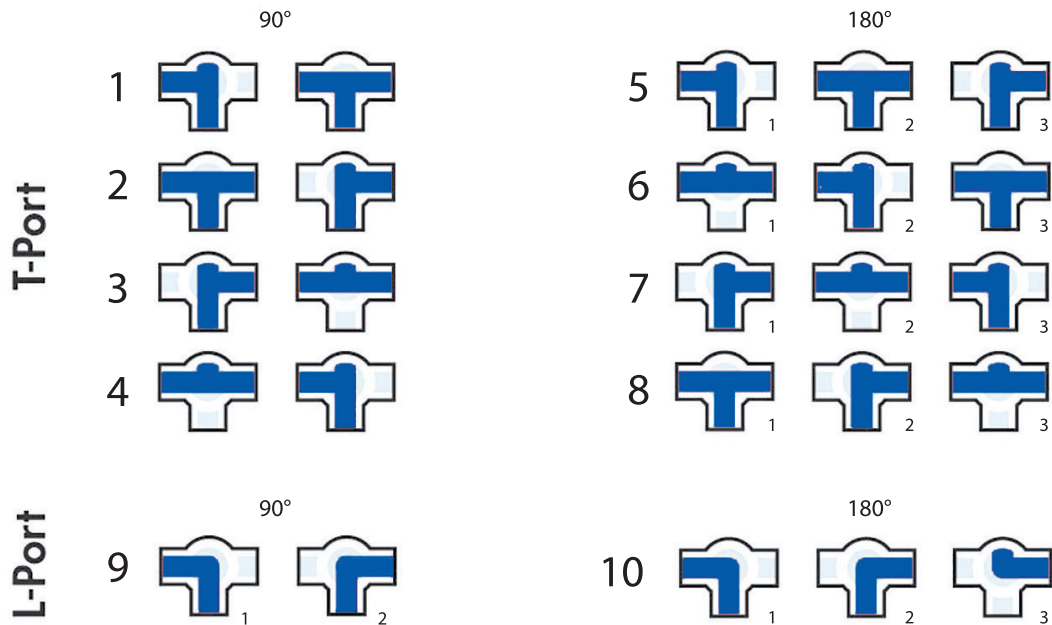


SIZE	L PORT	T PORT
1/4"	3	5
3/8"	3	6
1/2"	4	8
3/4"	7	13
1"	12	22
1 1/4"	20	35
1 1/2"	34	59
2"	51	88

DIMENSIONS (INCHES)

SIZE	A	B	C	D	E	F	K	G	H	Ra	Rb
1/4"	2.81	0.39	1.34	0.35	2.44	4.92	0.35X0.35	1.65	1.47	0.12	0.12
3/8"	2.81	0.39	1.34	0.35	2.44	4.92	0.35X0.35	1.65	1.47	0.12	0.12
1/2"	2.81	0.39	1.34	0.35	2.44	4.92	0.35X0.35	1.65	1.47	0.12	0.12
3/4"	3.29	0.59	1.65	0.35	2.76	4.92	0.35X0.35	1.65	1.47	0.12	0.12
1"	3.54	0.71	2.05	0.35	3.23	5.51	0.35X0.35	1.97	1.65	0.14	0.12
1 1/4"	4.57	0.98	2.28	0.43	3.47	5.51	0.43X0.43	1.97	1.65	0.14	0.14
1 1/2"	5.24	1.26	2.64	0.55	3.82	7.09	0.55X0.55	2.76	1.97	0.18	0.14
2"	5.75	1.58	3.07	0.55	2.25	7.09	0.55X0.55	2.76	1.97	0.18	0.14

FLOW CHART



HOW TO ORDER

1"	16	6	6	R	1	OH
Size	Series	Body	Ball & Stem	Seat	Flow Plan	Options
SIZE	SERIES	BODY	BALL & STEM	SEAT	FLOW PLAN	Options
1/4"	16	6 316 Stainless Steel	6 316 Stainless Steel	R RTFE	1	OH Oval Handle
3/8"					2	
1/2"					3	
3/4"					4	
1"					5	
1 1/4"					6	
1 1/2"					7	
2"					8	
					9	
					10	

Chicago Valves
& Controls



Toll-Free (833) 831-2312

Local (312) 637-3557

Fax: (312) 637-3543

E-Mail: sales@chicagovalves.com

www.chicagovalves.com

885 Cambridge Dr.

Elk Grove Village, Illinois 60007 U.S.A.