

# Chicago Valves & Controls



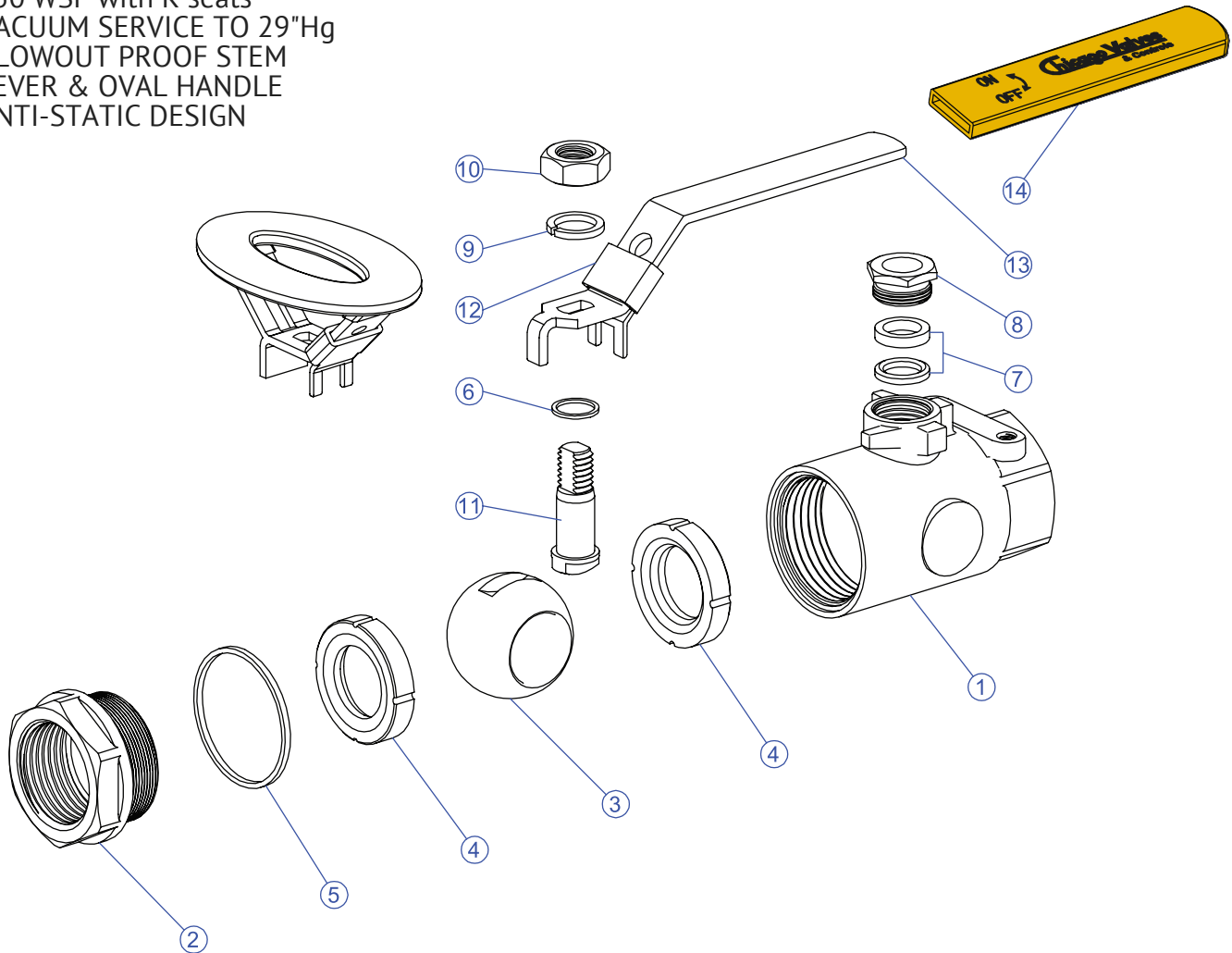
**SERIES 24**

**STANDARD PORT THREADED**

**2PC BALL VALVE**

2000 CWP (1/4"-1")  
 1500 CWP (1 1/4"-2")  
 316 STAINLESS STEEL - ASTM A351 CF8M  
 CARBON STEEL - ASTM A216 WCB  
 150 WSP with RTFE seats  
 250 WSP with K seats  
 VACUUM SERVICE TO 29"Hg  
 BLOWOUT PROOF STEM  
 LEVER & OVAL HANDLE  
 ANTI-STATIC DESIGN

## Series 24



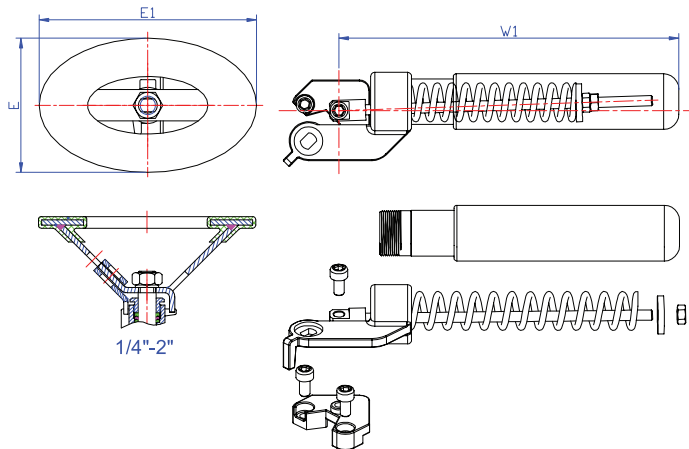
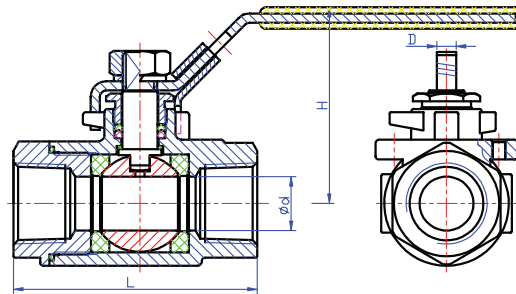
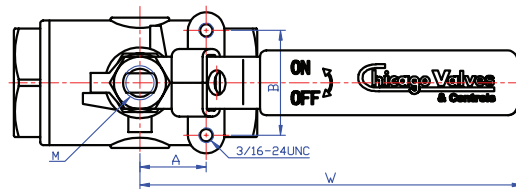
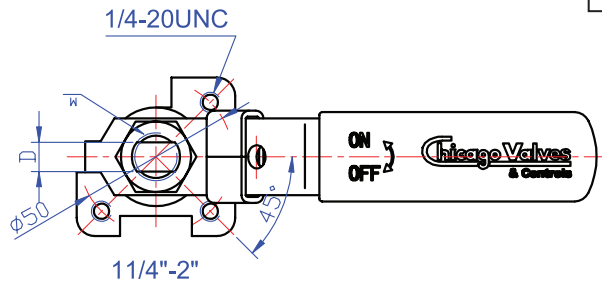
### PARTS AND MATERIAL

PART NO.	PART NAME	QTY.	MATERIAL
1	Body	1	Carbon Steel ASTM A216 WCB 316 Stainless Steel ASTM A351 CF8M
2	End Piece	1	Carbon Steel ASTM A216 WCB 316 Stainless Steel ASTM A351 CF8M
3	Ball	1	316 Stainless Steel
4	Seat	2	RTFE Carbon Fill PTFE
5	Body Seal	1	PTFE, Graphite
6	Thrust Washer	1	Carbon Fill PTFE
7	Stem Packing	2	PTFE, Graphite
8	Packing Nut	1	300 Series Stainless Steel
9	Lock Washer	1	300 Series Stainless Steel
10	Handle Nut	1	300 Series Stainless Steel
11	Stem	1	316 Stainless Steel
12	Locking Device	1	300 Series Stainless Steel
13	Handle	1	300 Series Stainless Steel
14	Handle Sleeve	1	PVC

### SPRING LOADED HANDLE

PART NO.	PART NAME	QTY.
1	Handle Gland	1
2	Socket Screw	2
3	Head Cap	1
4	Machine Screw	1
5	Threaded Rod	1
6	Spring Coil	1
7	Flat Washer	1
8	Hex Nut	2
9	Handle Pipe	1
10	Handle Sleeve	1

## Series 24



### DIMENSIONS (INCHES)

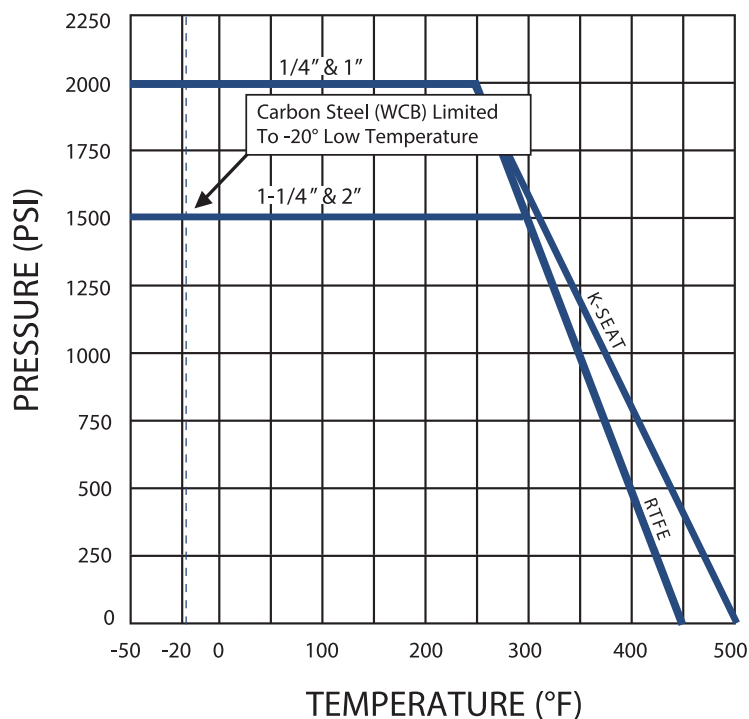
SIZE	d	L	H	W	W1	D	E	E1	A	B	M
1/4"	0.46	2.25	2.13	3.94	7.90	0.21	2.48	4.02	0.45	1.11	5/16-18UNC
3/8"	0.50	2.25	2.13	3.94	7.90	0.21	2.48	4.02	0.45	1.11	5/16-18UNC
1/2"	0.50	2.32	2.13	3.94	7.90	0.21	2.48	4.02	0.45	1.11	5/16-18UNC
3/4"	0.69	3.12	2.50	4.88	9.50	0.25	2.48	4.02	0.85	1.34	7/16-14UNC
1"	0.88	3.40	2.66	4.88	9.50	0.25	2.48	4.02	1.03	1.34	7/16-14UNC
1-1/4"	1.00	4.08	3.47	5.75	13.40	0.37	3.19	5.20			5/8-18UNC
1-1/2"	1.26	4.35	3.63	5.75	13.40	0.37	3.19	5.20			5/8-18UNC
2"	1.50	5.39	3.82	5.75	13.40	0.37	3.19	5.20			5/8-18UNC

## APPLICABLE STANDARDS

SHELL TEST	ASME B16.34
SEAT TEST	ASME B16.34
THREADED ENDS	ASME B16.11

SIZE	CV (GPM)	WEIGHT (LBS)
1/4"	6	0.75
3/8"	7	0.71
1/2"	7	0.75
3/4"	25	1.41
1"	25	1.76
1-1/4"	35	3.22
1-1/2"	46	4.32
2"	80	6.08

## PRESSURE-TEMPERATURE RATINGS SERIES 24



## HOW TO ORDER

Size	Series	Body	Ball & Stem	Seats	Options
1"	24	6	6	R	OH
<b>SIZE</b>	<b>SERIES</b>	<b>BODY</b>	<b>BALL &amp; STEM</b>	<b>SEATS</b>	<b>Options</b>
1/4"	24	4 Carbon Steel		R RTFE	SR Spring Return Handle
3/8"		6 316 Stainless Steel		K Carbon Fill PTFE	OH Oval Handle
1/2"					
3/4"					
1"					
1-1/4"					
1-1/2"					
2"					

**Chicago Valves**  
& Controls



Toll-Free (833) 831-2312

Local (312) 637-3557

Fax: (312) 637-3543

E-Mail: [sales@chicagovalves.com](mailto:sales@chicagovalves.com)

[www.chicagovalves.com](http://www.chicagovalves.com)

885 Cambridge Dr.

Elk Grove Village, Illinois 60007 U.S.A.